



*Barletta*  
B O A T S



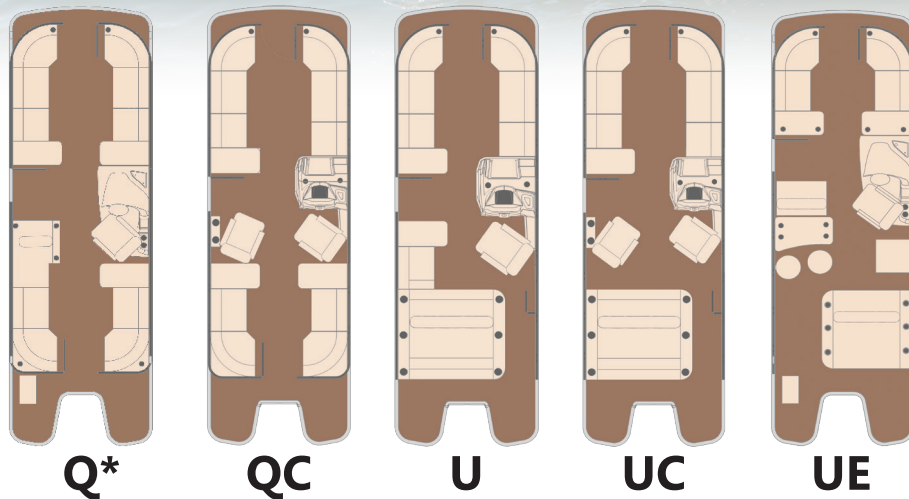
L-CLASS · E-CLASS · C-CLASS  
BARLETTAPONTOONBOATS.COM

L25QCSSA

# L-CLASS REFINED LUXURY



Battle Noise Fatigue with V.I.P. Technology featured on **ALL** Barletta Pontoon Boats for the smoothest, quietest ride in Industry



Luxurious furniture, high-end electronics, and classic styling that will turn heads. The Barletta L-Class will leave you breathless with anticipation to get out on the water. No more “noise fatigue” with Barletta’s patent pending V.I.P. Technology – providing the smoothest, quietest, rattle-free ride in the industry – bar none. Offering more standards than any other boat in the industry, and a refined list of options, the L-Class is built with your on-water experience in mind. Meet the L-Class, the pontoon boat other boats aspire to be.

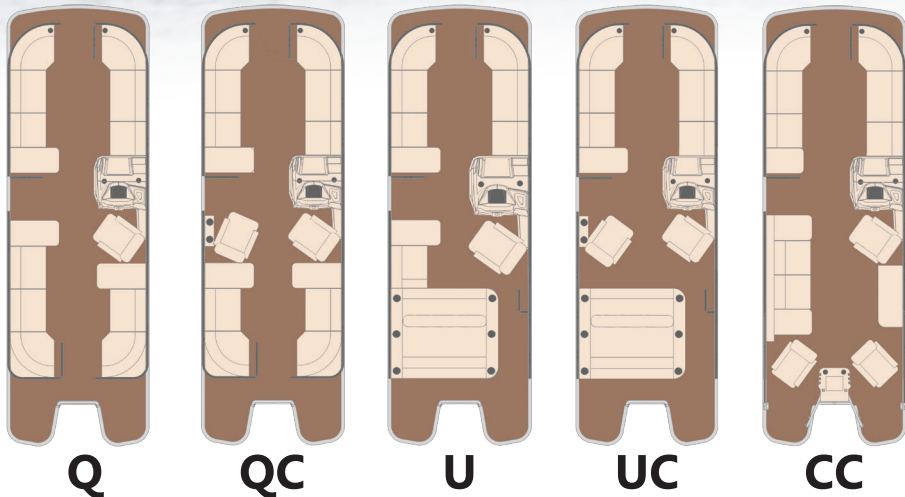
Model	L21*	L23*	L25*
Floorplans	Q*, QC, U	Q*, QC, U, UC	Q*, QC, U, UC, UE
Deck Length	23' 6"	25' 6"	27' 6"
Pontoon Tube Length	21' 6"	23' 6"	25' 6"
Beam	8' 6"	8' 6"	8' 6"
Max HP (2-Tube/3-Tube)	150/250	150/350	150/400
Person's Capacity (2-Tube/3-Tube)	9/11	11/12	13/14
Fuel Capacity (2-Tube/3-Tube)	30/48	30/48	30/48

\*Q models available in SS (Sport Stern) configuration. L23 & L25 Q models feature **NEW** for MY2020 Ultra-Club Lounge seating. L21 Q model features traditional quad-lounge seating configuration. All specifications listed are subject to change at any time, without notice or obligation, and are based on the latest information available at the time of printing. Visit [BarlettaPontoonBoats.com](http://BarlettaPontoonBoats.com) for most up-to-date information.

# E-CLASS SIMPLE ELEGANCE



E22UC

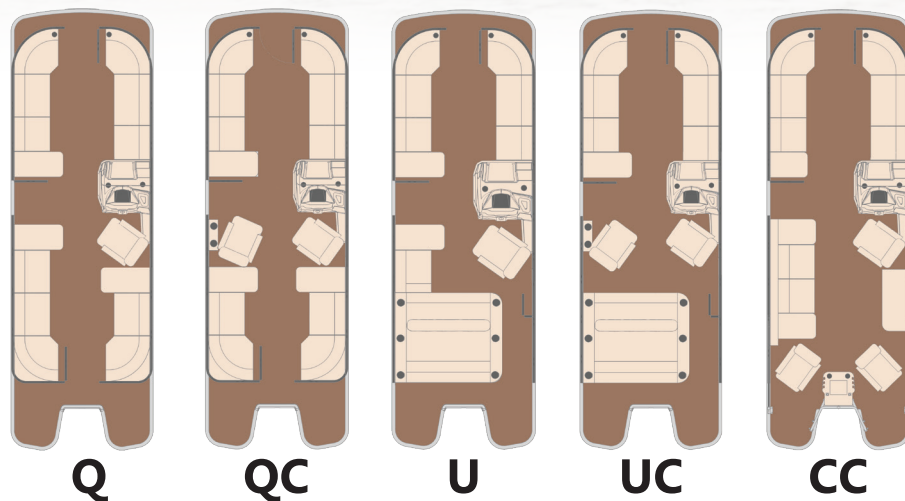


For the more discerning buyer, Barletta's mid-level pontoon boat series, the E-Class, is virtually guaranteed to meet or exceed you and your families expectations. Sharing much of the same DNA as Barletta's high-end L-Class, the E-Class delivers on construction, comfort and convenience at a price point and value that can't be beat. Completely refreshed for MY2020, the E-Class features NEW interior accents, NEW flooring options, and IMPROVED standards - you're going to love what we've done. Meet the E-Class, high-end features without the high-end price tag - the BEST of both worlds.

Model	E20*	E22*	E24*
Floorplans Offered	Q, QC	Q, QC, U, UC, CC	Q, QC, U, UC, CC
Deck Length	22' 6"	24' 6"	26' 6"
Pontoon Tube Length	20' 6"	22' 6"	24' 6"
Beam	8' 6"	8' 6"	8' 6"
Max HP (2-Tube/3-Tube)	150/150	150/250	150/300
Person's Capacity (2 and 3 Tube)	9/11	11/12	12/14
Fuel Capacity (2 and 3 Tube)	24/34	24/34	24/34

\*Q models available in SS (Sport Stern) configuration. All specifications listed are subject to change at any time, without notice or obligation, and are based on the latest information available at the time of printing. Visit [BarlettaPontoonBoats.com](http://BarlettaPontoonBoats.com) for most up-to-date information.

# C-CLASS NO COMPROMISES



Introducing the Barletta C-Class...the NEWEST and MOST-ANTICIPATED addition to the Barletta family. This is not your ordinary pontoon boat, and once you see it, you'll agree... the C-Class screams premium pontoon boat at a value price point. Featuring best-in-class furniture, an automotive-styled helm with tons of legroom, and V.I.P. Technology to battle "noise-fatigue" and provide an industry-best ride, the C-Class is the perfect boat for you and your family to experience the "Barletta Way." Meet the C-Class - Unmatched Value, No Compromises.

Model	C20*	C22*	C24*
Floorplans Offered	Q, QC	Q, QC, U, UC, CC	Q, QC, U, UC, CC
Deck Length	21' 2"	23' 2"	25' 2"
Pontoon Tube Length	20' 3"	22' 3"	24' 3"
Beam	8' 6"	8' 6"	8' 6"
Max HP (2-Tube/3-Tube)	150/150	150/200	150/200
Person's Capacity (2 and 3 Tube)	8/11	10/12	12/14
Fuel Capacity (2 and 3 Tube)	24/34	24/34	24/34

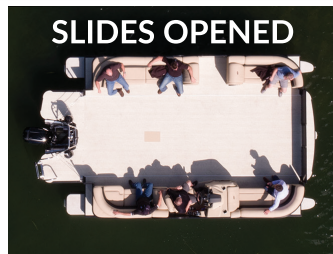
\*All specifications listed are subject to change at any time, without notice or obligation, and are based on the latest information available at the time of printing. Visit [BarlettaPontoonBoats.com](http://BarlettaPontoonBoats.com) for the most up-to-date information.

# SLIDE-TOON®



## The ONLY Expanding Pontoon Boat of Its Kind - A Barletta Exclusive

Barletta Pontoon Boats is excited to turn pontoon slide-outs into a reality. Unveiled at the 2019 Minneapolis Boat Show, the Barletta Slide-Toon® is an exciting floating paradise.



The same width as a standard pontoon boat at 8' 6", the Slide-Toon® features a quad-lounge layout. **When expanded to 14' 10"**, your family and friends will gain an additional 128 square feet of space! The Slide-Toon® is fully functional and performs exceptionally well, no matter if the slides are opened or closed.

**CAN BE TRAILERED, AND  
WILL FIT ON A LIFT!**

5 YEAR BOW-TO-STERN    5 YEAR STRUCTURAL  
3 YEAR HYDRAULICS WARRANTY

## Pontoon Boats Built Specifically for Saltwater Environments

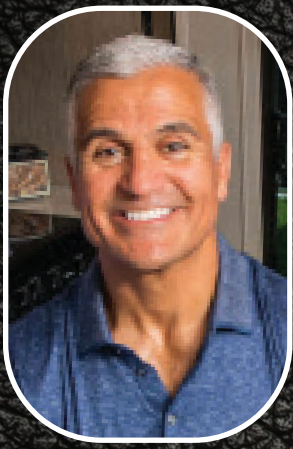
Distinctly different than standard pontoon boats, the Barletta Coastal Edition Pontoon Boats are built to better handle the harsher conditions of coastal saltwater. All Barletta Coastal Edition pontoon boats are equipped with:

- Solid Extruded Keel
- Sealed Lifting Strakes
- Sealed Wave Tamers
- Saltwater Anodes
- Full Underbelly Skin
- Reinforced Nosecones for Big Water
- Aluminum Based Captains Chairs
- Aluminum Powder Coated Hinges
- Stainless Steel Ladders & Tube-Tow Bars
- Standard Fresh Water Rinse Kit
- All Aluminum or Stainless Hardware

**Don't be Fooled Into Buying a Fancy Saltwater Sticker - They Won't Protect Your Investment**



COASTAL EDITION



Bill Fenech,  
President & Co-Owner

Our focus at Barletta Pontoon Boats will always be on you and how we can make our product and your experience better.

Faced with the decision to either spend money on huge, multi-page catalogs that go obsolete as soon as they are printed, or to spend money where it matters - on our pontoon boats - the choice was simple. We chose to invest in our boats. Each and every component of our boats has been a conscious decision with you and your family's on-water experience in mind. Our website will be able to provide you the most accurate and up-to-date information about our company and our pontoon boats.

We are building pontoon boats that will change the industry... and would be honored to welcome you to the Barletta Pontoon Boat family.

*Bill Fenech*



## WE'VE GOT YOUR BACK

Ask any of our dealers or customers and they'll tell you, NO ONE stands behind their products like Barletta Pontoon Boats. Whether it's the **Limited Lifetime Structural Warranty**, the **10 Year Bow-to-Stern Warranty** or our industry first holiday "hotlines" - we're here for YOU!



### White Glove PRE-DELIVERY INSPECTION

Barletta Pontoon Boats delivers **show-room ready** pontoon boats to our dealer network utilizing our one-of-a-kind, industry-unique **White Glove PDI** department.

Not only do our pontoon boats go through several, rigorous inspections during production, but they are subject to an **ADDITIONAL, COMPLETELY INDEPENDENT** inspection to guarantee fit, finish, and function. Over **400 items are inspected** on each and every boat. It's not a Barletta Pontoon Boat, until our White Glove PDI department says it's a Barletta.

**No one else in the industry is doing this!**

The result is a product that we are proud to build, our dealers our proud to represent and sell, and you are proud to show off to your family and friends.

**It's the Barletta "way"... and you deserve no less.**



2018 NMMA AWARD  
FOR CUSTOMER  
SATISFACTION

### VISIT OUR FRIENDS AT:



BUILD YOUR PERFECT BARLETTA AT [BARLETTAPONTOONBOATS.COM](http://BARLETTAPONTOONBOATS.COM)

Barletta Boat Company, LLC recommends all persons take a U.S. Coast Guard (USCG) approved course in safe boat handling procedures or its equivalent along with fully reviewing, in detail, all boat product operating manuals and procedures. The information printed in this brochure is based on the latest product information available at the time of printing. Barletta Boat Company, LLC, reserves the right to make changes at any time to prices, colors, materials, equipment, specifications and models, and to discontinue models without notice or obligation. All specifications are approximate and dimensions are nominal. Text may mention optional equipment which may not be included as a standard item in your model of choice. Photographs and illustrations may also show optional equipment available at additional cost. September 2019

